



**keuxl**

**CATALOG 2025**

*Smart Living, Anywhere You Need It*

# YOUR HOME ANYWHERE

**Keu XL** doesn't just expand the space. It expands the possibilities.

Its silhouette maintains the understated elegance that characterizes Keu, but inside everything opens up: two separate bedrooms, two full bathrooms, a large central living room, and a kitchen that connects with the landscape. Each space is designed to flow, to breathe, to share.

At Keu, we believe we don't just sell homes, but rather an experience that transforms with you. We are inspired by the precision of nautical design and the calm of minimalism to create spaces that adapt to your rhythm, your surroundings, and your way of life—whether surrounded by nature, the city, or the silence.





It is the highest point of Keu's vision:  
architecture that is not limited by size, but  
transforms it into experience.

We use materials that interact with time: nautical-treated woods that age with character, tempered glass that expands natural light, and finishes that invite living.

Each space is conceived as a unique piece, with standards that go beyond the conventional.

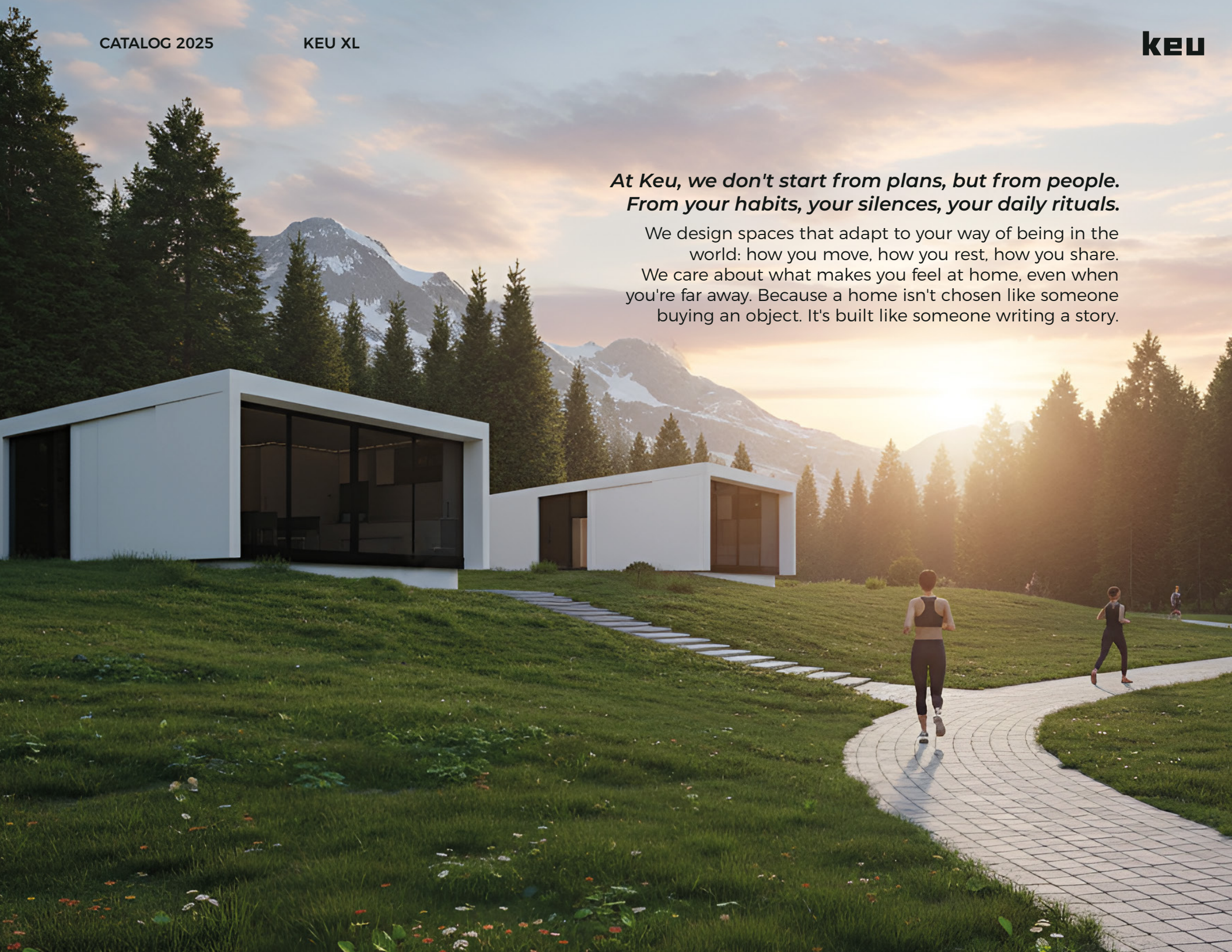
*We don't look for the ordinary, but for what leaves a mark. Because your home shouldn't just work: it should excite you.*



*We design for those who perceive what is not always visible.  
For those who find beauty in the whisper of a softly closing door, in wood that breathes with its surroundings, in the calm of a space that blends with its surroundings.  
Because at Keu, the essential doesn't shout: it whispers.*

***At Keu, we don't start from plans, but from people.  
From your habits, your silences, your daily rituals.***

We design spaces that adapt to your way of being in the world: how you move, how you rest, how you share. We care about what makes you feel at home, even when you're far away. Because a home isn't chosen like someone buying an object. It's built like someone writing a story.



# BATHROOM

**Keu XL** features two separate bathrooms, each connected to its own bedroom.

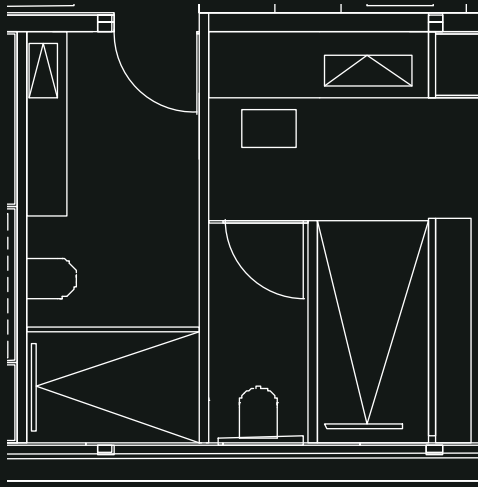
Both are designed as spaces for relaxation: spa-like showers, floating sinks, dimmable lighting, and premium materials that encourage self-care.

The layout allows each bathroom to function as an intimate, quiet, and functional space, without interference or overlap.

It's a design conceived for shared well-being.

*"Comfort isn't distributed. It's multiplied."*





100%  
**Customizable**

Wall-mounted vanity unit with integrated porcelain sink

-Porcelain countertop

-Porcelain-clad shower with matte black enclosure

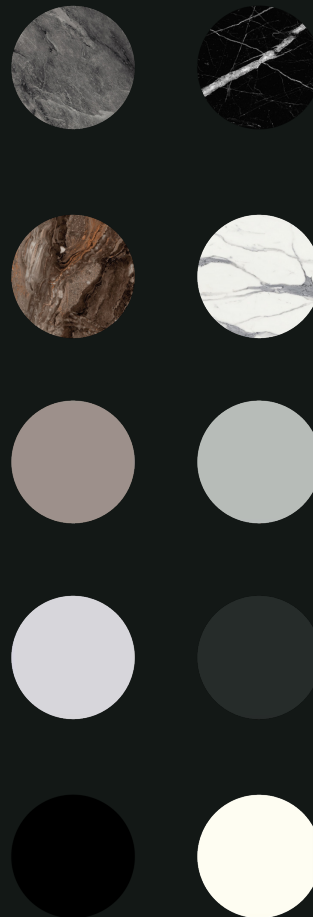
-Wall-hung toilet with built-in cistern

-Backlit mirror (31.5" x 31.5") (0.80 m x 0.80 m)

-Matte black faucets

-Integrated storage

**SHOWER FINISH**



**TAPS COLLECTION**





## BEDROOM

Keu XL offers two completely independent bedrooms, each with direct access to its own bathroom.

This configuration allows each inhabitant to have their own rhythm, their own silence, their own space.

The warm finishes, natural lighting, and built-in furniture create enveloping atmospheres, designed for deep rest and emotional disconnection.

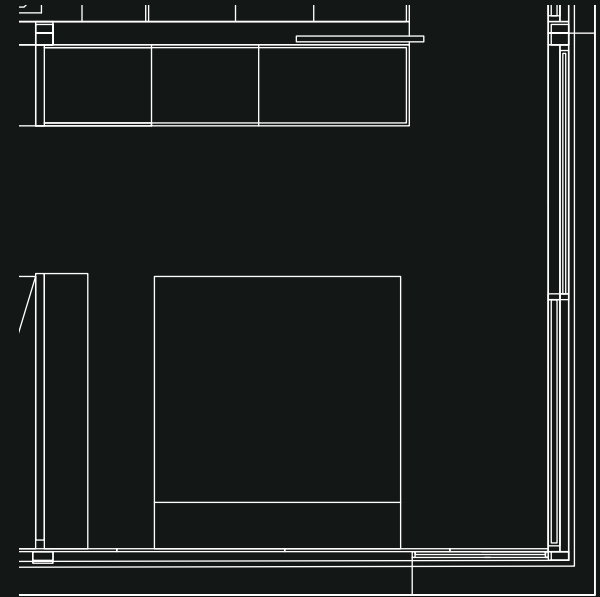
Ideal for families, couples, or creative teams who value privacy without losing connection.

*“Here, you don't share a room. You share comfort.”*

SOFA - BED



BED WITH CANOPY



100%  
**Customizable**

- Queen-size pull-down bed with storage
- Built-in wardrobe with hanging rail

## KITCHEN / LIVING ROOM

The Keu XL kitchen elegantly integrates into the social area, without losing functionality or prominence.

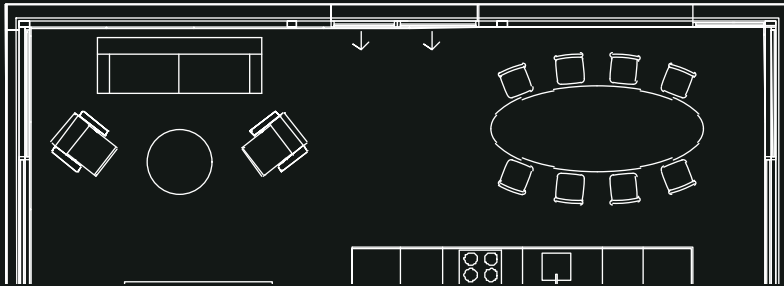
Designed for sharing, cooking, and conversation, it connects with the dining and living rooms in an open, bright, and versatile space.

The central island, integrated appliances, marble finishes, and black faucets elevate the everyday experience to an aesthetic act.

The room, with over 25 m<sup>2</sup>, allows for multiple settings: relaxation, work, meetings, contemplation.

*"There are no limits here. There are possibilities."*





## 100% Customizable

Suspended design on an exposed metal frame with backlighting.

Porcelain countertop with integrated 16" x 16" / 0.40 m x 0.40 m sink

Lacquered cabinetry with matching drawers and cabinets.

Includes:

- 2- or 4-zone ceramic cooktop (depending on configuration)
- Integrated extractor hood
- Integrated refrigerator
- Hidden waste bin
- Cutlery included
- Metal drawer organizers

### OUTDOOR CABINETS



### TAPS COLLECTION



### PORCELAIN TILES





# KEU360

Immerse yourself in the Keu experience from anywhere in the world. Our 360° tour allows you to explore every corner of the module as if you were already inside: feel the light, discover the materials, understand the layout. *It's not a simulation. It's the first step toward inhabiting your space.*

[START TOUR](#)

## Home automation

*Because comfort can also be programmed.*

Each piece is equipped with a comprehensive home automation system that transforms the way you live.

The light adapts to your mood. The temperature responds to your routine. Security activates without you noticing.

Everything works in harmony, with no visible cables or complex commands. Just you and your space, in sync.

“You don't need to touch a switch. Your home already knows what you need.”

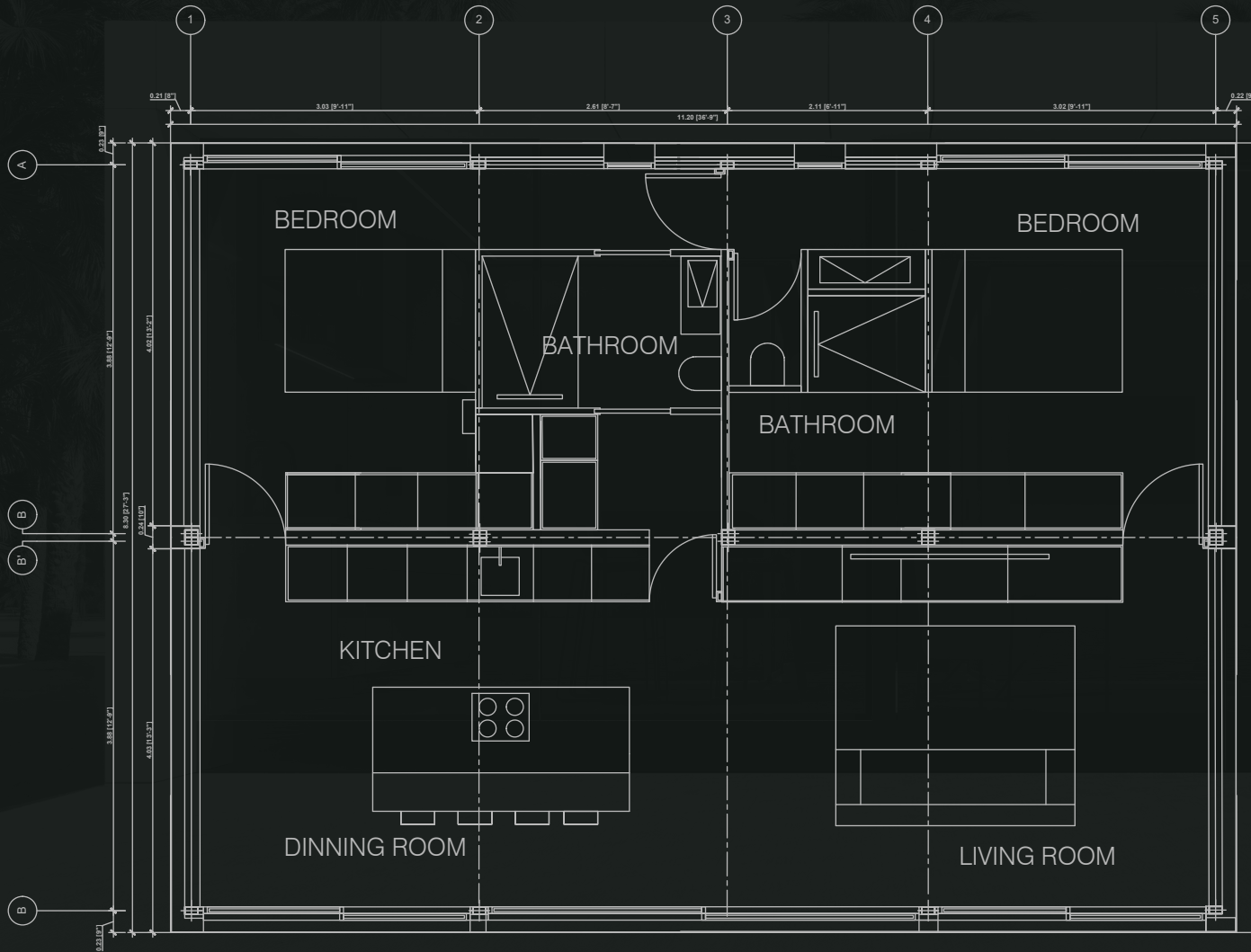
From your phone, tablet, or voice assistant, you can control:

- Ambient and spot lighting
- Smart curtains and blinds
- Air conditioning and ventilation
- Security and remote access
- Music, sound, and ambiance
- Preset scenarios for work, rest, or inspiration

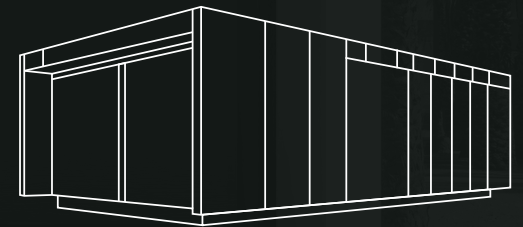


The greatness of the KEU XL lies in its ability to transform according to your needs. We don't believe in one-size-fits-all solutions, but in spaces that evolve with you.

# MODEL 1

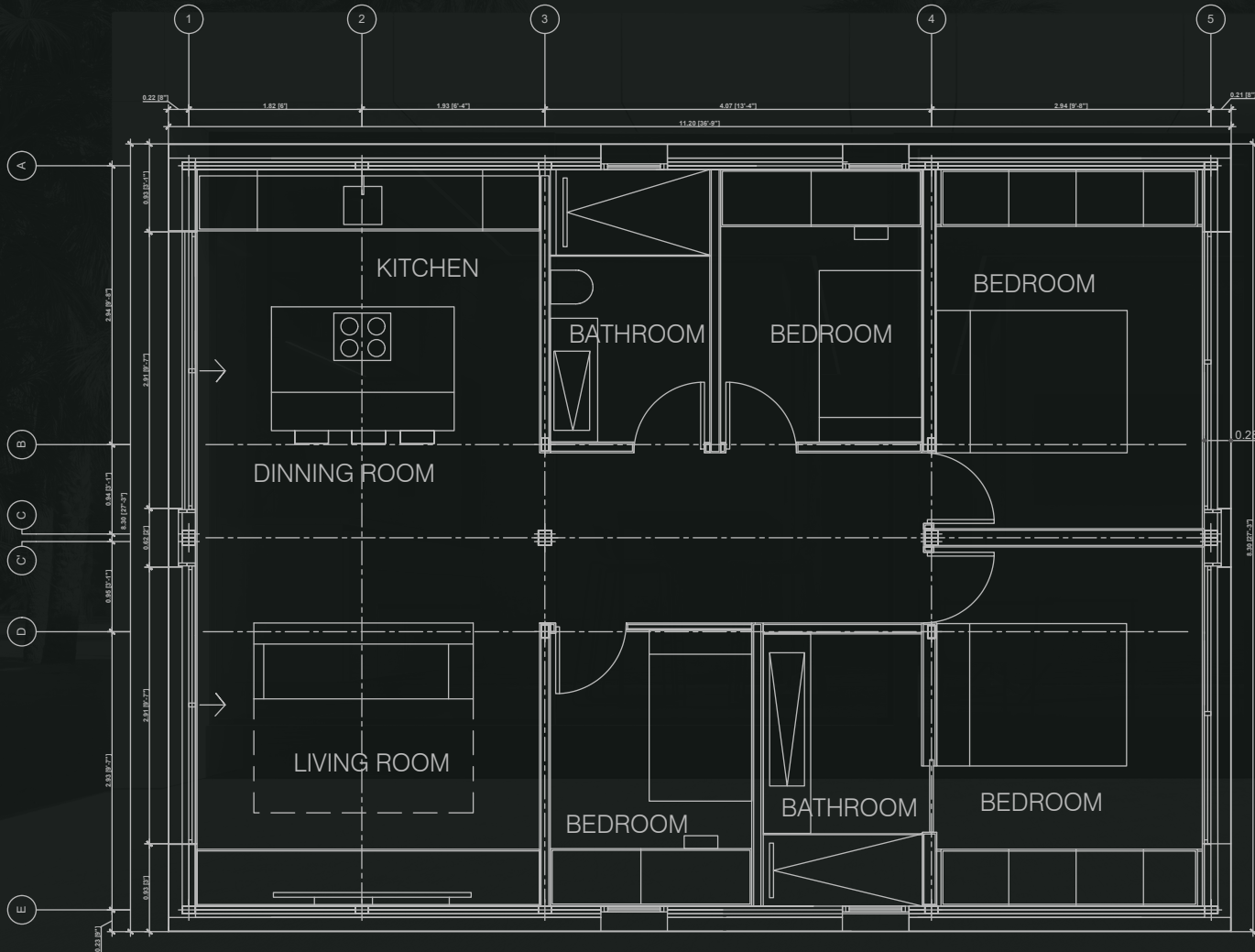


<b>LENGTH</b>	36' 9"	11,20 M
<b>WIDTH</b>	27' 3"	8,30 M
<b>HEIGHT</b>	12'	3,67 M
<b>WEIGHT</b>	66.150 LB	30.000 KG
<b>TOTAL AREA</b>	1000 FT <sup>2</sup>	93 M <sup>2</sup>

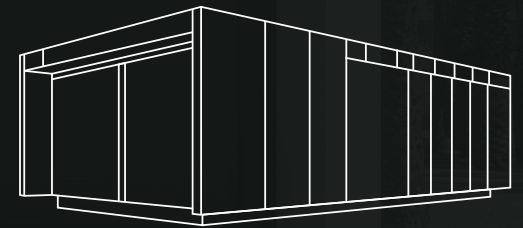


The greatness of the KEU XL lies in its ability to transform according to your needs. We don't believe in one-size-fits-all solutions, but in spaces that evolve with you.

## MODEL 2

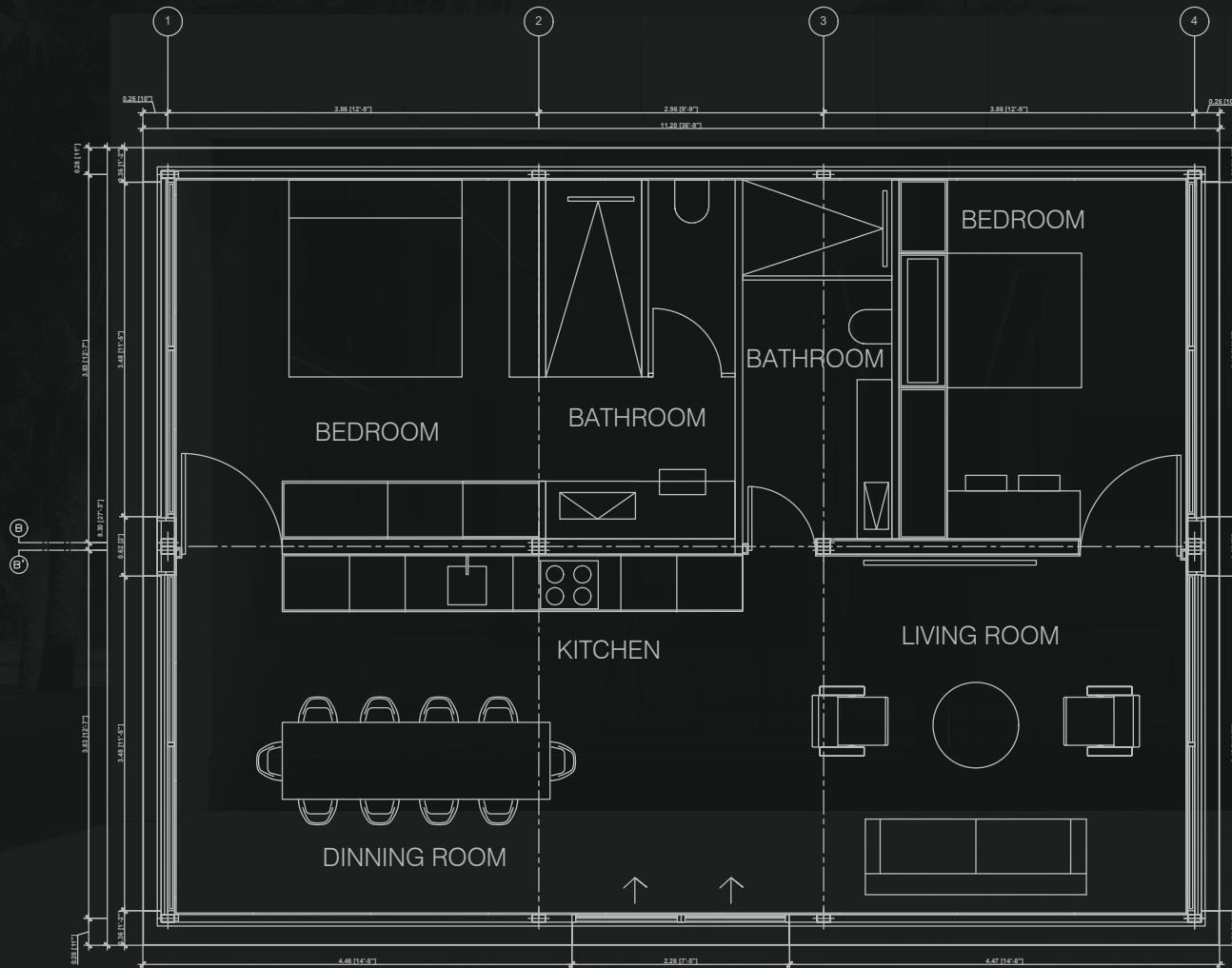


<b>LENGTH</b>	36' 9"	11,20 M
<b>WIDTH</b>	27' 3"	8,30 M
<b>HEIGHT</b>	12'	3,67 M
<b>WEIGHT</b>	66.150 LB	30.000 KG
<b>TOTAL AREA</b>	1000 FT <sup>2</sup>	93 M <sup>2</sup>

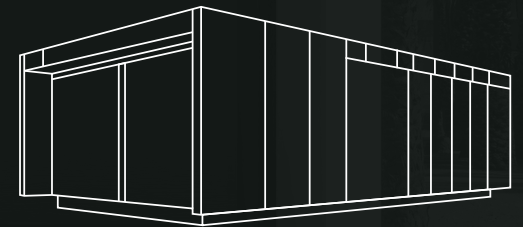


The greatness of the KEU XL lies in its ability to transform according to your needs. We don't believe in one-size-fits-all solutions, but in spaces that evolve with you.

## MODEL 3



<b>LENGTH</b>	36' 9"	11,20 M
<b>WIDTH</b>	27' 3"	8,30 M
<b>HEIGHT</b>	12'	3,67 M
<b>WEIGHT</b>	66.150 LB	30.000 KG
<b>TOTAL AREA</b>	1000 FT <sup>2</sup>	93 M <sup>2</sup>



# KEU CONFORT

## FITTED KITCHEN

(Whirlpool Appliances Series)

## FULL BATHROOM

(Floor-to-ceiling shower)

## HURRICANE KIT CAT. 5

(Only applicable in Caribbean areas)

## AUTOMATIC AIR CONDITIONING

(Mitsubishi Model)

## BACKLIT WARDROBES

## 55"/1.4 m SAMSUNG TV

## CARPENTRY AND ARMORED GLASS

(Alta eficiencia energética-Serie Kline)

## BLACKOUT SYSTEM

(Motorized Blinds)

## EXTERIOR LIGHTING (Perimeter LED)

## EXTERNAL STAIRS 48,4 ft<sup>2</sup>/ 4.5 m<sup>2</sup>

(Encapsulated Flooring)

## ITALIAN SOFA/BED

## INCLASS CHAIRS (Confort Range)

## ELECTRONIC LOCK

## ULTRA-MATTE PET INTERIOR FINISHES



TECHNICAL COORDINATION  
SERVICE

# KEU LUXURY

## FITTED KITCHEN

(Bosch Appliances Series)

## FULL BATHROOM

(Floor-to-ceiling shower with alcove)

## HURRICANE KIT CAT. 5

(Only applicable in Caribbean areas)

## AUTOMATIC AIR CONDITIONING

(Mitsubishi Model)

## BACKLIT WARDROBES

+ ACCESSORIES (Cutlery Trays, Dividers, etc.)

## 55"/1.4 M SAMSUNG TV

+ SOUND SYSTEM (Sonos)

## CARPENTRY AND ARMORED GLASS

(High Energy Efficiency - Kline Series)

## BLACKOUT SYSTEM

(Motorized Blinds)

## EXTERIOR LIGHTING (Perimeter LED)

## 355 ft<sup>2</sup>/33 m<sup>2</sup> Exterior Deck

(Encapsulated Flooring)

## ITALIAN SOFA/BED

## INCLASS CHAIRS (Premium Range)

## ELECTRONIC LOCK

## ULTRA-MATTE PET INTERIOR FINISHES

## HOME AUTOMATION (smart home)



TECHNICAL COORDINATION  
PROJECT MANAGEMENT

# Personalized support at every stage

At Keu, we believe that every space begins with a conversation.

That's why, more than selling homes, we build relationships.

From the first contact, we support you in every decision: from imagining your ideal space to choosing the materials that will make it unique.

Our team guides you throughout the entire

- Initial exploration: Together we visualize how Keu fits into your environment and lifestyle.

- Custom design: You select finishes, textures, and configurations with expert guidance.

- Production and assembly: We coordinate every detail so the process is smooth, transparent, and without surprises.

- Close after-sales service: We stay with you, because the connection doesn't end with delivery.





**Available worldwide**

KEU represents a transformative moment. Our designs are not limited by geography: KEU's adaptable, internationally shipped homes bring our dedication to design, quality, and sustainability to customers around the world.

Enter a new era of modular living with KEU and redefine the future of life.

A modern, minimalist building with a glass facade and a dark metal frame. The building is set against a backdrop of a snowy mountain range and evergreen trees. The sky is clear and blue. The building's design is clean and contemporary, with large glass panels reflecting the surrounding environment.

**keuxl**

**CATALOG 2025**

*Smart Living, Anywhere You Need It*